



**When:** Friday, October 19th

**Where:** Process Work Institute, 2049 NW Hoyt St, Portland OR 97209  
Also distance accessible via teleconference

**Time:** 9:30 am – 4:30 pm

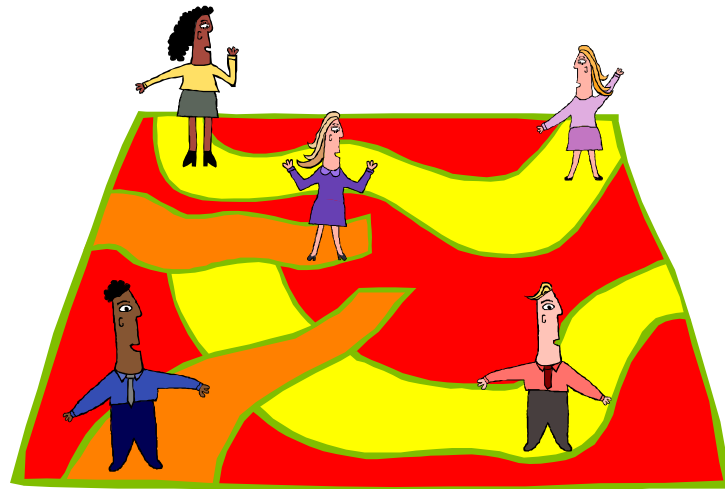
**Teacher:** Pierre Morin, M.D., Ph.D.

**Cost:** \$90 before October 12th  
\$100 thereafter

**CEU Credit:** Available for LPC (add \$20.00 for CEU credit)

**To Register:** Please call PWI at 503-223-8188 a credit card or mail a check made out to the Process Work Institute.

# Leadership and Facilitation Issues in Health Care I:



## *The Power of beliefs*

Individual care givers have diverse beliefs, philosophical ideas, and spiritual views upon which they rely for guidance, decision making, and treatment interventions.

Contradicting philosophies hover in the background and influence relationships between policy makers, care givers and affected families. Lingering moods and beliefs have a huge impact on our client's chance for recovery. In this class we will explore the power of beliefs, how they affect relationship, and ways to facilitate them.

A one-day workshop for medical doctors, nurse practitioners, nurses, psychologists, social workers, counselors and other health care professionals interested in health care issues. Includes basic introduction to theories of health care delivery and systemic and relationship issues in clinical care.

### LEARNING OBJECTIVES

- Review current theoretical models of health care delivery
- Discuss the relevance of psychological and social factors in health care delivery issues
- Review the relevance of rank and diversity awareness in health care
- Facilitate cultural and individual health beliefs
- Understand provider-patient interactions relevant in health care delivery and barriers to treatment.

**Pierre Morin, MD, Ph.D.** is a Certified Process Work Diplomate, trainer and psychotherapist, who brings 25 years of experience as a practicing physician and counselor specializing in integrative health and psychosocial medicine.

Dr. Morin serves as the director of clinical services at a local community health center, and works with chronic pain management, chronic disease self-management, coma and end of life care, community and minority health.

His research interests include the social determinants of health and current trends in creating partnerships between consumer groups and professionals and their potential for reducing barriers and increasing sustainability and positive outcomes.

Email: [pierre@creativehealing.org](mailto:pierre@creativehealing.org),  
[www.creativehealing.org](http://www.creativehealing.org)